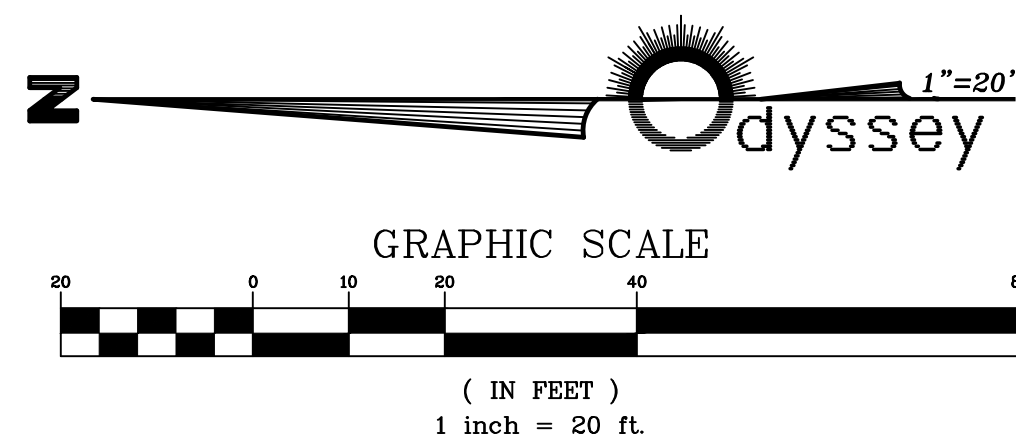
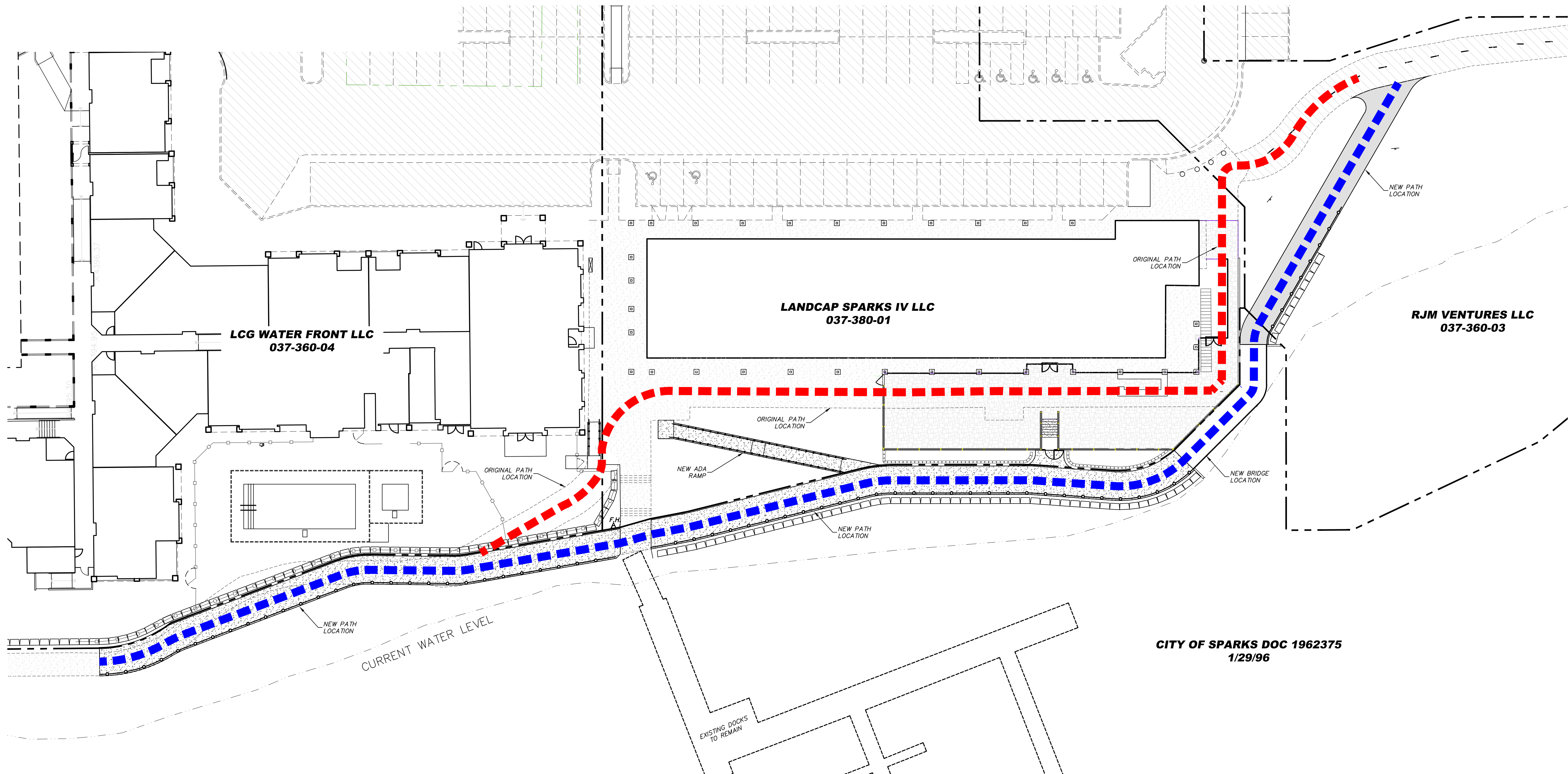


# LEGEND:

- - - - - NEW MARINA PATH
- - - - - ORIGINAL MARINA PATH



### BASIS OF ELEVATION:

DATUM: NAVD 88  
 PROJECT BENCHMARK = BM 29 WITH A PUBLISHED ELEVATION OF 4390.40.  
 ELEVATION IS BASED ON RECORD OF SURVEY 3885 AS FILED IN THE  
 OFFICIAL RECORDS OF WASHOE COUNTY, NEVADA.

### BASIS OF BEARING:

DATUM: NEVADA WEST STATE PLANE COORDINATE SYSTEM WITH A  
 PUBLISHED WITH A GRID TO GROUND COMBINATION SCALE FACTOR OF  
 1.000197939 APPLIED TO COORDINATE VALUES AS PUBLISHED ON RECORD  
 OF SURVEY 3885 AS FILED IN THE OFFICIAL RECORDS OF WASHOE COUNTY,  
 NEVADA.

REV.	DATE	DESCRIPTION	BY	APP'D

DATE: SEPTEMBER 2020  
 DRAWN BY: F.B.  
 DESIGNED BY: F.B.  
 CHECKED BY: F.B.

**SPARKS MARINA  
 PATH RELOCATION  
 PEDESTRIAN PATH DISPLAY**  
 SPARKS, WASHOE COUNTY, NEVADA

895 ROBERTA LANE, SUITE 104, SPARKS, NV 89431  
 (775) 359-3303 FAX (775) 359-3304  
 ODYSSEY ENGINEERING INCORPORATED

SCALE  
 HORIZ. 1" = 20'  
 VERT. ---  
 JOB NO. X

SHEET  
 1  
 OF  
 1

